

An architectural rendering of a modern, multi-story residential building at night. The building features a warm, terracotta-colored facade and large glass windows and balconies. The interior lights are on, and the balconies are illuminated from within, showing people living there. The building is surrounded by lush greenery, including trees and shrubs. In the foreground, there are some people walking on a path and a small outdoor seating area with a table and chairs. The sky is dark with some stars visible.

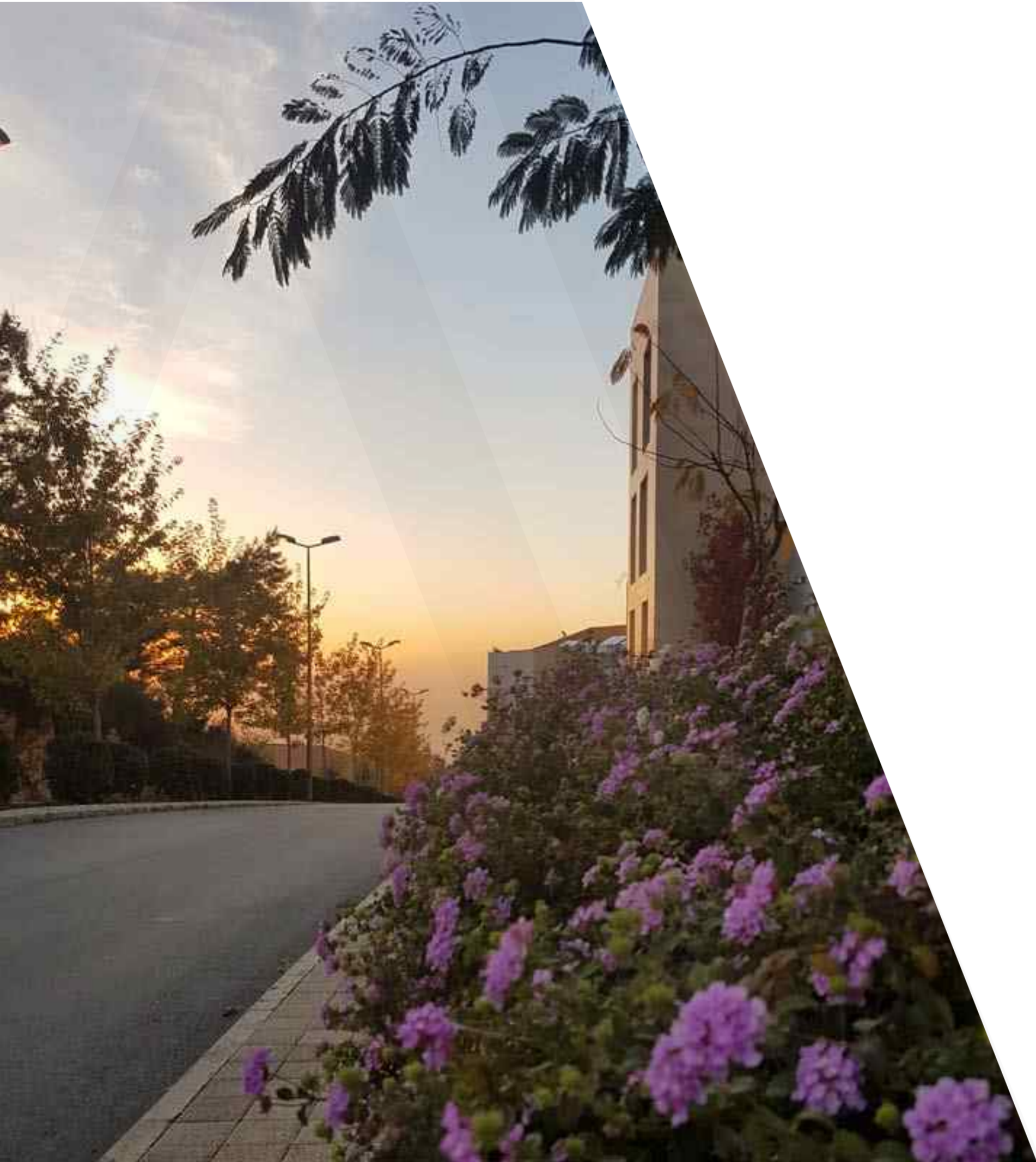
KEEN PARK

BeitMisk | EMAAR

An aerial photograph of a coastal city, likely Hong Kong, showing a dense urban landscape with numerous high-rise buildings. The city is situated on a peninsula and is surrounded by a large body of water, the harbor. In the foreground, there are green, hilly areas with some buildings. The sky is clear and blue. Overlaid on the image are several large, semi-transparent geometric shapes, including triangles and a large 'A' shape, in shades of blue and white. The text 'KEENAPARK' is positioned in the upper right quadrant of the image.

KEENAPARK

TO MANY, TRUE LUXURY IS
LEADING AN EXCLUSIVE LIFESTYLE
IN A POLLUTION-FREE ENVIRONMENT,
SURROUNDED BY GREENERY
AND A VIEW TO DIE FOR.



KEENA **A** PARK

**TO US, IT'S EXACTLY THE SAME,
BUT IN A CONVENIENTLY STUNNING
120 SQM APARTMENT.**

At Keena Park, you will live the life you've always wanted in a luxurious 2 or 3 bedroom apartment or loft with an unobstructed view over Beirut and the Mediterranean Sea.

**WE ADVISE ON THE BEST PAYMENT
PLAN FOR YOU AND TAKE CARE OF
ALL YOUR PAPERWORK.**

KEENAPARK

BeitMisk



KEENAPARK

BeitMisk



KEENAPARK

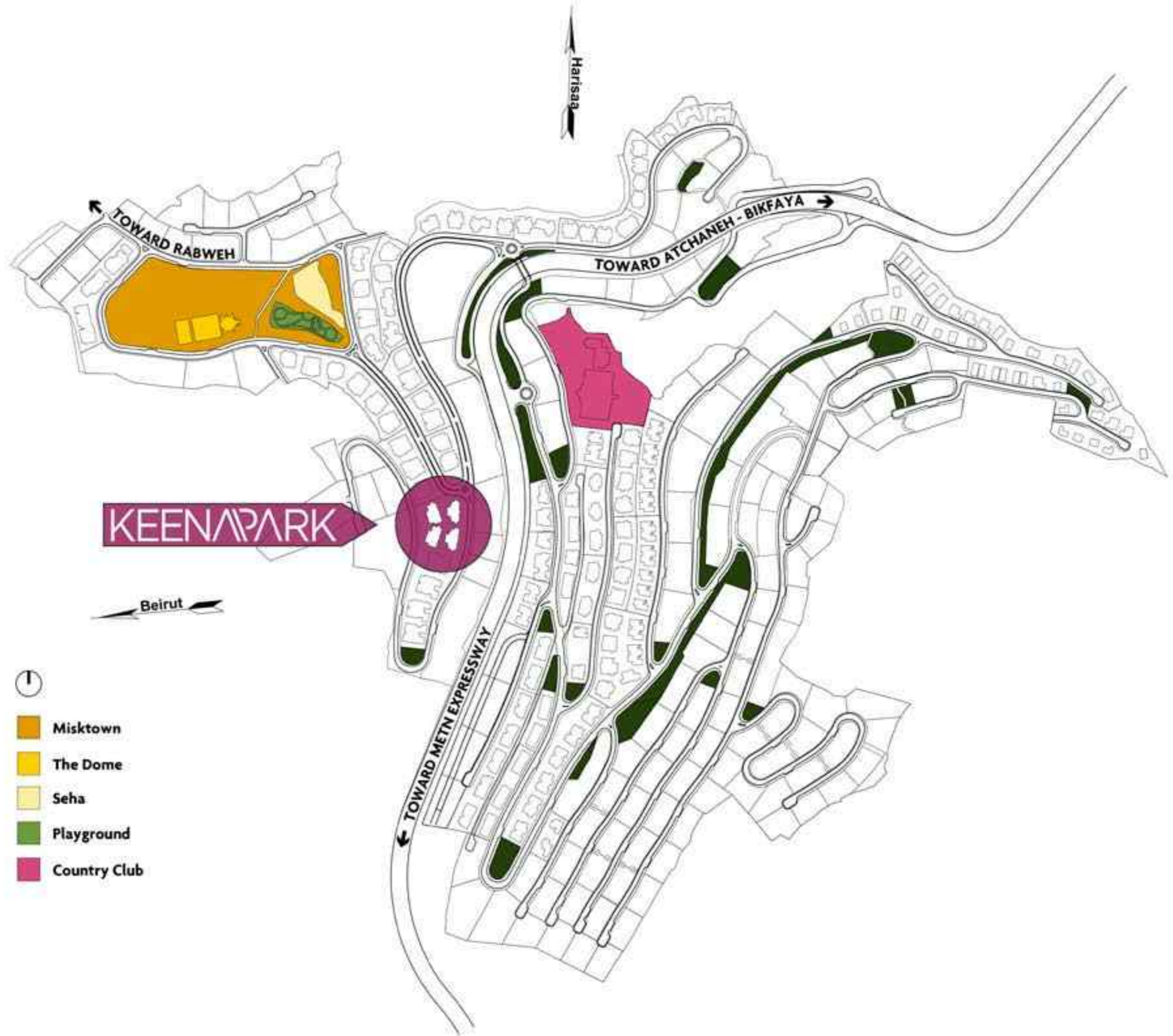
BeitMisk



KEENAPARK

BeitMisk





LANDSCAPE

Keena Park is comprised of 4 buildings connected by a private garden, a lovely space for you and your family to enjoy on a sunny day in total serenity.

Residences at Keena Park range from 200 sqm to 350 sqm. This beautiful collection of 2 to 3 bedroom apartments are designed with the highest specifications.

Breathtaking views and flawlessly crafted interiors are combined to create a luxurious living experience in the heart of Beitmisk.



KEENAPARK

BeitMisk



KEENAPARK

BeitMisk



KEENA PARK



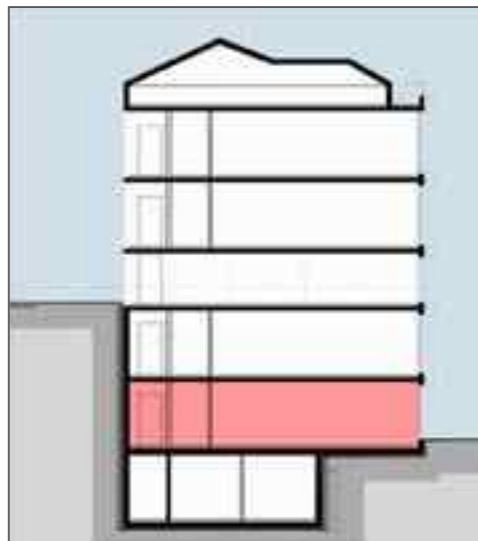
KEENA 1 G01

3 BEDROOMS

Apartment area: 211 sqm

Garden area: 177 sqm

Total Sellable area: 270 sqm



KEENA PARK



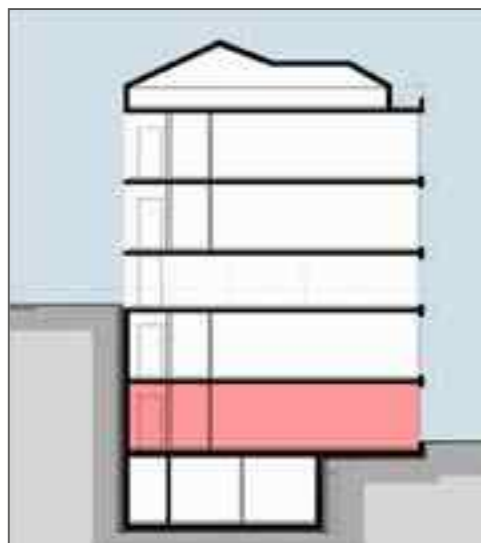
KEENA 1 G02

3 BEDROOMS

Apartment area: 204 sqm

Garden area: 355 sqm

Total Sellable area: 322 sqm



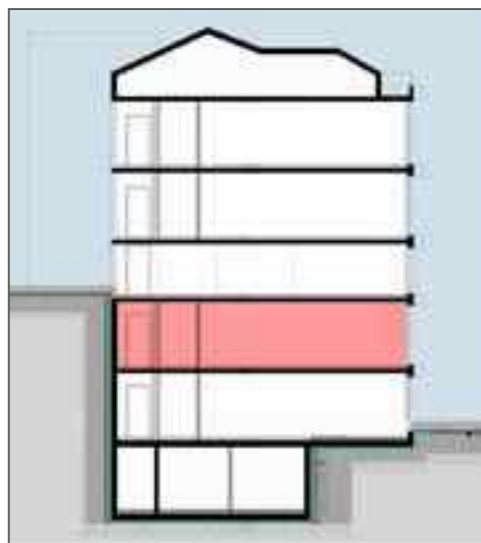
KEENA PARK



KEENA 1 G11

3 BEDROOMS

Apartment area: 211 sqm



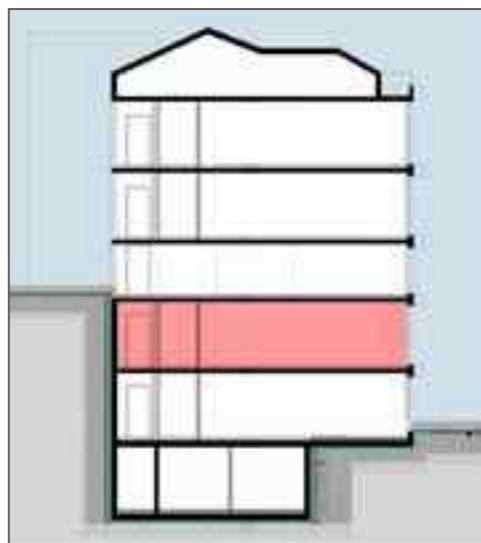
KEENA PARK



KEENA 1 G12

3 BEDROOMS

Apartment area: 204 sqm



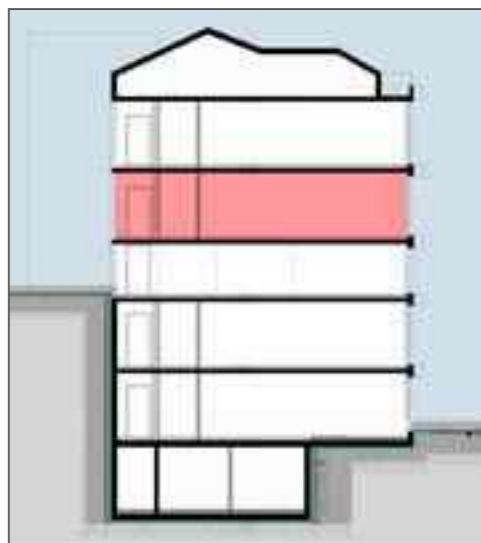
KEENA PARK



KEENA 1 101

3 BEDROOMS

Apartment area: 211 sqm



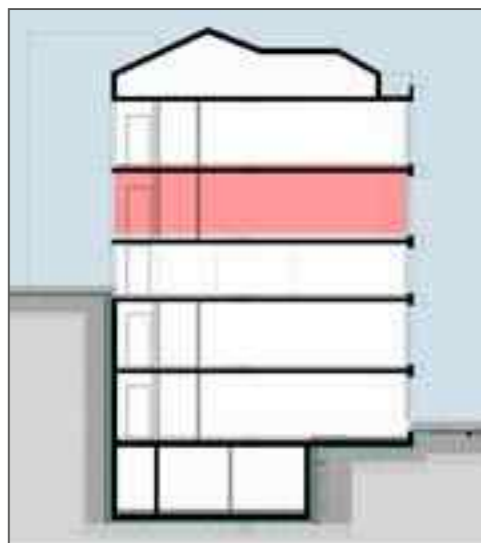
KEENA PARK



KEENA 1 102

3 BEDROOMS

Apartment area: 204 sqm



KEENAPARK

BeitMisk



KEENAPARK

BeitMisk



KEENA PARK



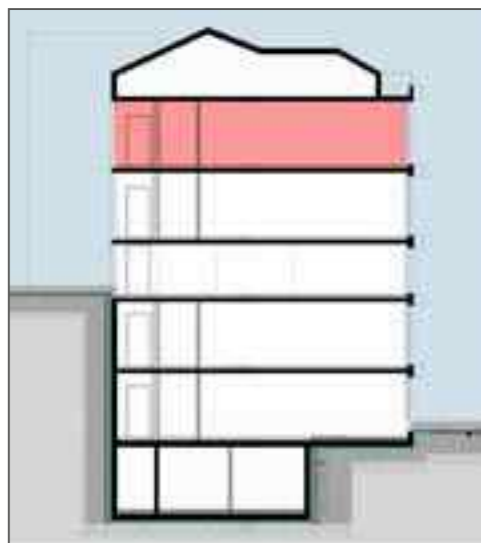
KEENA 1 201

2 BEDROOMS + ATTIC

Apartment area: 164 sqm

Attic area: 127 sqm

Total Sellable area: 206 sqm



1st Floor



KEENA PARK



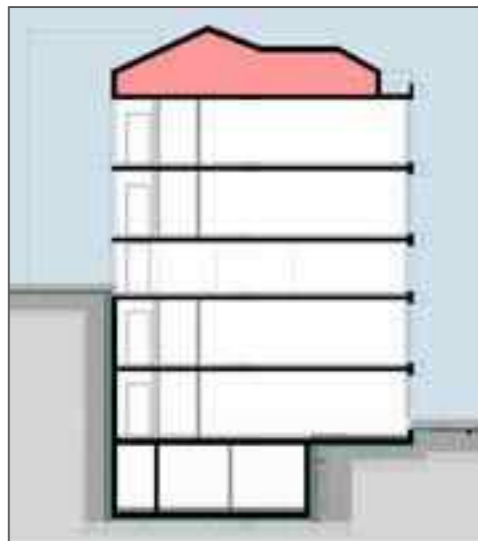
KEENA 1 201

2 BEDROOMS + ATTIC

Apartment area: 164 sqm

Attic area: 127 sqm

Total Sellable area: 206 sqm



Attic



KEENA PARK



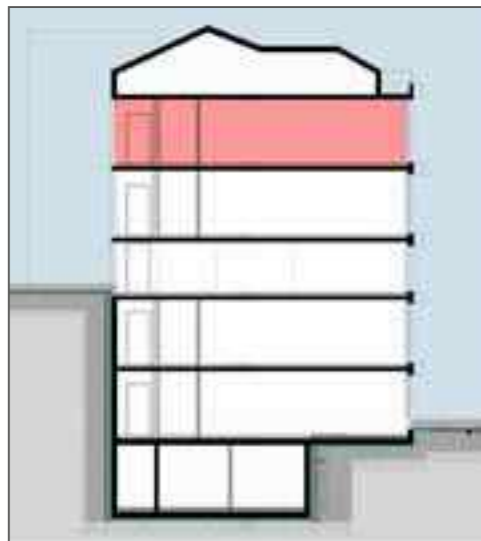
KEENA 1 202

2 BEDROOMS + ATTIC

Apartment area: 162 sqm

Attic area: 127 sqm

Total Sellable area: 204 sqm



1st Floor



KEENA PARK



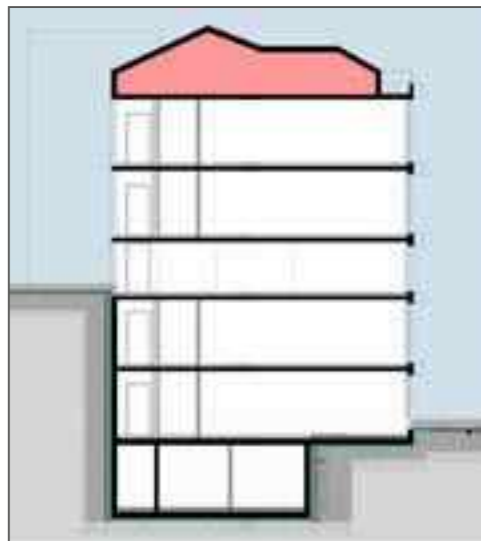
KEENA 1 202

2 BEDROOMS + ATTIC

Apartment area: 162 sqm

Attic area: 127 sqm

Total Sellable area: 204 sqm



Attic



ABOUT BEITMISK

Located off the Metn expressway, BeitMisk is only 15 minutes away from Beirut Central District and less than 10 minutes from the best schools, malls and hospitals, promising an ideal life within reach of everything, all year long.

Once you move in, our facility management offers you 24/7 support covering a wide range of maintenance, security, landscaping, garbage collection and technology related services.





**EVERYTHING IS DESIGNED TO
INCREASE THE COMFORT AND
HAPPINESS OF OUR RESIDENS.**

With our state of the art country club,
beautifully landscaped outdoor areas,
and kids' playground, you and your family
will benefit from a healthy lifestyle and
peace of mind.



A COMMUNITY WORTH LIVING IN

At Beitmisk, the comfort of every resident is a round-the-clock priority.

PROXIMITY

Only 10 mins away from Dora Highway & the best schools and hospitals.

CERTIFIED POLLUTION-FREE ENVIRONMENT

LOWEST MAINTENANCE FEES COUNTRY-WIDE

24/7 WATER, GAZ & ELECTRICITY SUPPLY

24/7 SECURITY

24/7 HELPDESK AND ON-DEMAND TECHNICIANS

WASTE MANAGEMENT

FIBER OPTIC CONNECTIVITY

KIDS PLAYGROUND & COUNTRY CLUB

CALL US

+961 1 21 21 21

+961 3 52 77 77 (Call or WhatsApp)

EMAIL US

info@beitmisk.com

VISIT US

BeitMisk, Metn Expressway
Aatchaneh, Mount Lebanon

BeitMisk | EMAAR